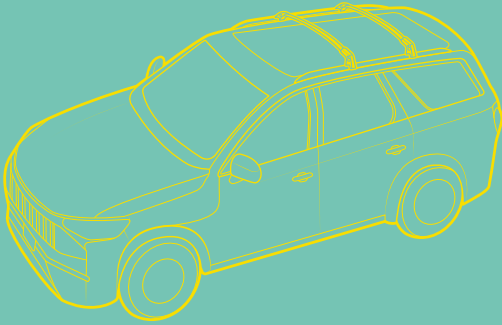




**YHT AUTO**



## Cross Bars Installation Instruction

Fit for Hyundai Palisade

[A-Premium.com](http://A-Premium.com)

[service@a-premium.com](mailto:service@a-premium.com)

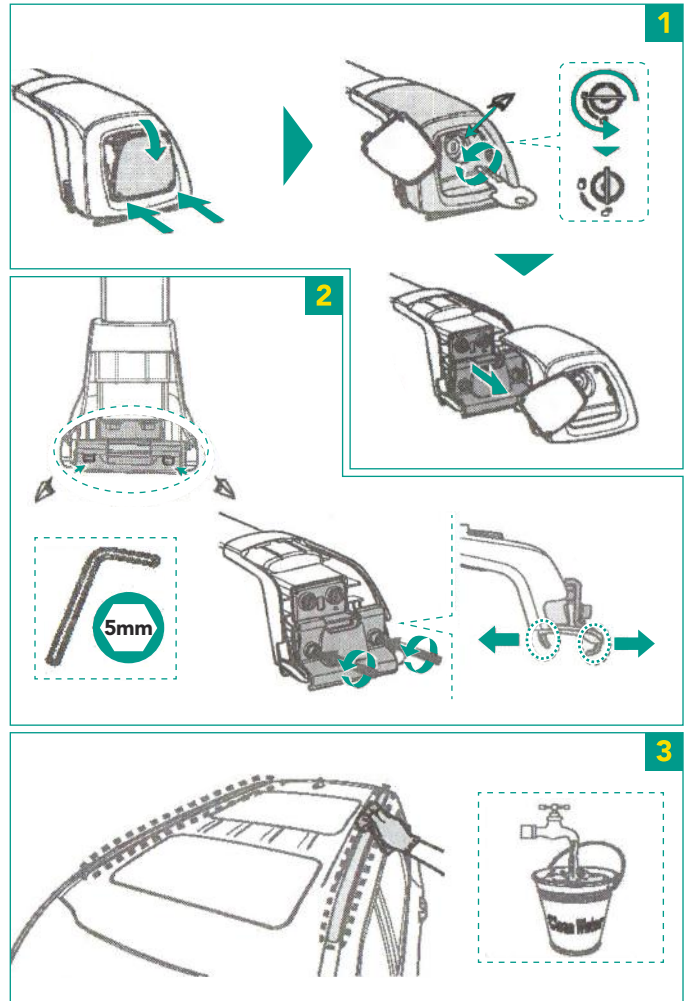
+1888 374 5088

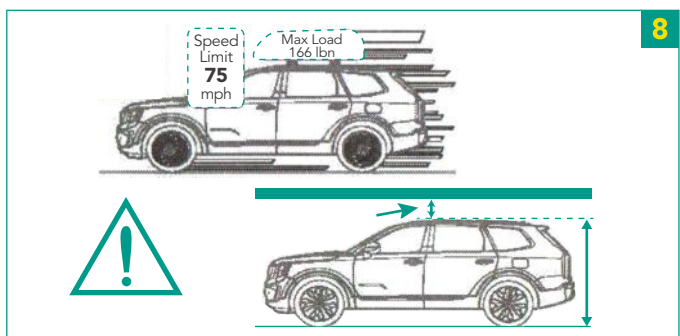
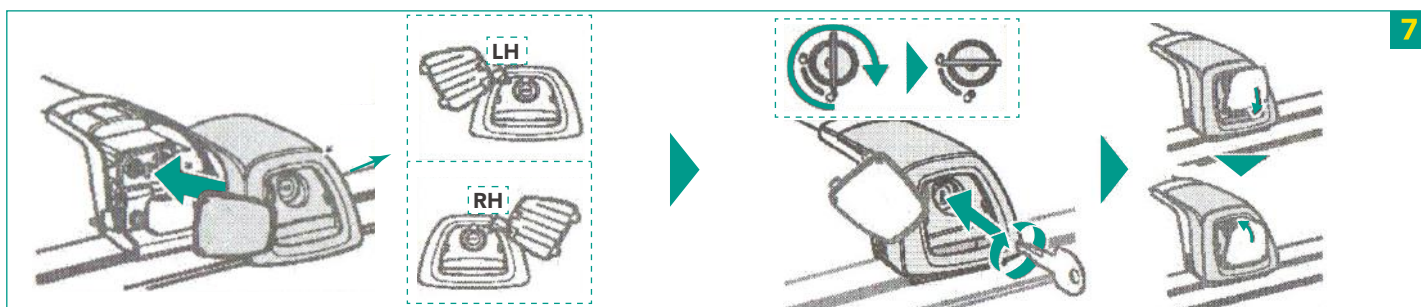
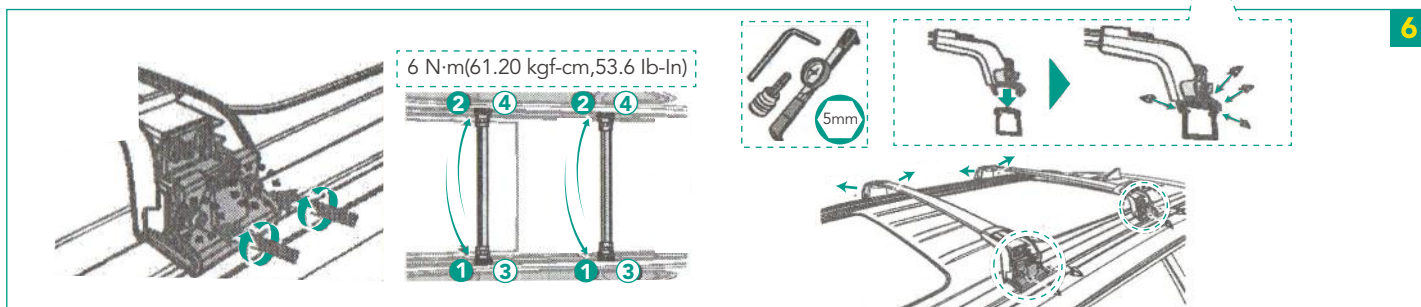
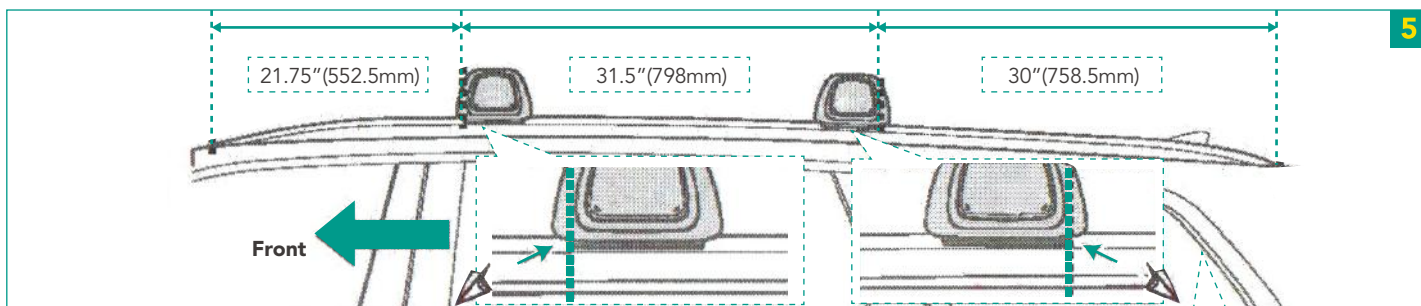
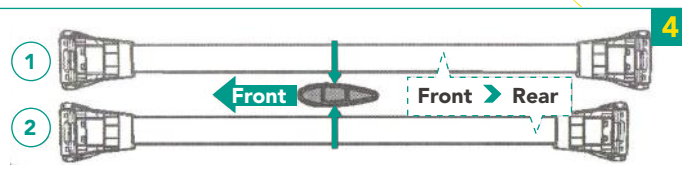
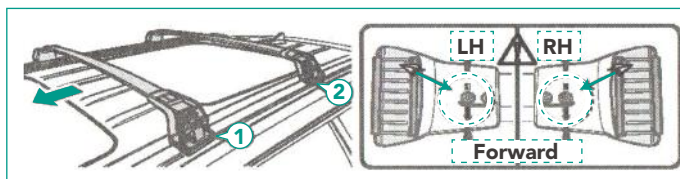
**YHTRR0HY001027**

### Before Installation

- Do not exceed manufacturer's roof load limits of 165 lbs / 75 kg (evenly distributed).
- Make sure panoramic window in the sunroof is closed when installing or removing the cross bars.
- Make sure crossbars are fastened securely to the side rails before sliding the panoramic roof.

### Installation Procedures





### Attention

Check the crossbar mounting bolts regularly and tighten the bolts when necessary. Please distribute the weight of the cargo evenly between front & rear crossbar, never exceed the maximum load capacity. Always secure roof loading with ropes and cables to prevent it from falling off during driving.

If you are not qualified or lack the skills to do the installation, please consult with a professional mechanic. Please make sure to take necessary safety precautions before operation.